

## Type A Wing Nuts Effortless Fastening for Non-Critical Assemblies.



Type A Wing Nuts offer two large metal wings that allow for easy hand tightening and loosening. They are designed to quickly assemble onto a stud, bolt, or screw and are commonly used in non-critical assemblies. Wing nuts are ideal for situations where a high amount of torque is not needed since the wings can be easily turned by hand. Earnest Machine stocks Type A Wing Nuts in diameters ranging from #6 to 3/8" in a RoHS compliant Zinc Clear Trivalent Plating.



### PRODUCT ATTRIBUTES

Diameters range from #6 to 3/8"  
Available in RoHS compliant Zinc Clear Trivalent  
Type A design offers a large wing pattern for an easier grip and faster assembly

### MARKETS FOR TYPE A WING NUTS

Construction Equipment  
Agricultural Equipment  
Mining Equipment  
Automotive

### THIS PRODUCT IS OFTEN CALLED

Butterfly Nuts  
Thumb Screw Nuts

### ADDITIONAL FASTENERS WE SUPPLY

Nylon Insert Wing Nuts  
Finished Hex Nuts  
Hex Jam Nuts  
Hex Head Cap Screws  
Hex Tap Bolts  
Full Thread Studs  
Machine Screws  
Threaded Rod

### AVAILABLE VALUE ADDED SERVICES

Bulk and full case quantities  
Secondary and rework services available  
Custom packaging services  
Custom plating

BACKED BY THE EARNEST

**Service**  
GUARANTEE

Inquire today at **+1 (800) 327-6378** or visit **EarnestMachine.com**

### CARBON STEEL TYPE A WING NUTS

Type A Wing Nuts are designed to quickly assemble onto a stud, bolt, or screw and are commonly used in non-critical assemblies. Wing nuts are ideal for situations where a high amount of torque is not needed since the wings can be easily turned by hand.

Type A Wing Nuts are manufactured in accordance with the latest revision of the following industry standards:

- ASME B18.6.9** Dimensional Requirements
- ASME B1.1** Thread Requirements
- ASME B18.18** Inspection and Quality Assurance

### THREADS

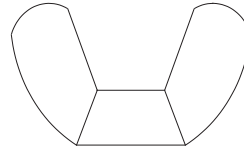
Threads made to requirements of ASME B1.1  
Unified Threads (UNC and UNF) Class 2B  
Thread acceptance per ASME B1.3, System 21

### PLATING

Zinc Clear (RoHS compliant Cr3+)

### MATERIAL AND PHYSICAL PROPERTIES

#### Carbon Steel

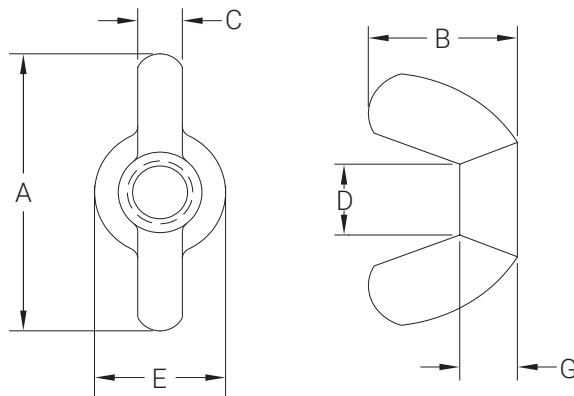


#### Chemical Composition Limits

CARBON (C)	PHOSPHORUS (P)	SULFUR (S)
Max	Max	Max
0.55	0.12	0.15

\*The specifications shown on this sheet are not intended to be used in the production of parts. Earnest Machine is not responsible or liable in any manner for any production errors and we certify the information present on this specification sheet is correct to the best of our knowledge.

©2023 Earnest Machine Products



### DIMENSIONS FOR CARBON STEEL TYPE A WING NUTS

SIZE	WIDTH (A)		HEIGHT (B)		WING THICKNESS (C)		DIAMETER BETWEEN WINGS (D)		BASE DIAMETER (E)		BASE HEIGHT (G)	
	MAX	MIN	MAX	MIN	MAX	MIN	MAX	MIN	MAX	MIN	MAX	MIN
#6 - 32	0.72	0.59	0.41	0.28	0.11	0.07	0.21	0.17	0.33	0.29	0.14	0.10
#8 - 32	0.91	0.78	0.47	0.34	0.14	0.10	0.27	0.22	0.43	0.39	0.18	0.14
#10 - 24	0.91	0.78	0.47	0.34	0.14	0.10	0.27	0.22	0.43	0.39	0.18	0.14
#10 - 32	0.91	0.78	0.47	0.34	0.14	0.10	0.27	0.22	0.43	0.39	0.18	0.14
1/4 - 20	1.10	0.97	0.57	0.43	0.18	0.14	0.33	0.26	0.50	0.45	0.22	0.17
5/16 - 18	1.25	1.12	0.66	0.53	0.21	0.17	0.39	0.32	0.58	0.51	0.25	0.20
3/8 - 16	1.44	1.31	0.79	0.65	0.24	0.20	0.48	0.42	0.70	0.64	0.30	0.26
3/8 - 24	1.44	1.31	0.79	0.65	0.24	0.20	0.48	0.42	0.70	0.64	0.30	0.26

Inquire today at **+1 (800) 327-6378** or visit **EarnestMachine.com**